

KWizCom Products

Installation and activation guide

KWizCom Support Team

Jan-2010

1. Product Installation

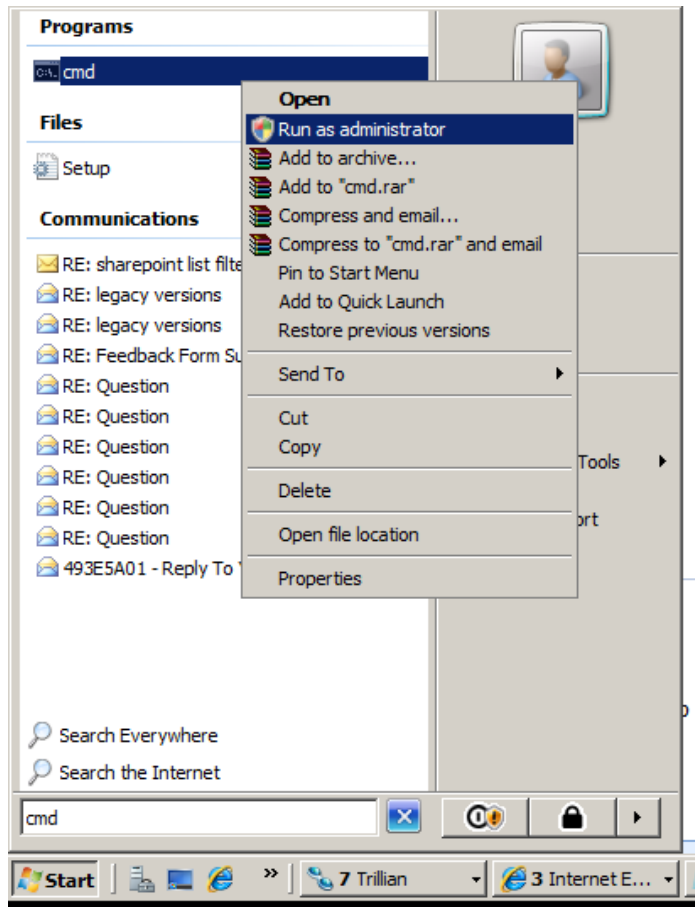
Please follow these instructions in order to install a KWizCom product:

1. Go to KWizCom site (<http://www.kwizcom.com>) and download the latest evaluation version of the purchased product.
2. Log in as **local admin** to your SharePoint/CRM/Project server.
3. Unzip the product zip file on your SharePoint/CRM/Project server.
4. Double-click the .msi file in order to begin the installation.

If after installation you cannot see the KWizCom web part in the Web part gallery or the KWizCom feature in site features or site collection features, there could be several reasons for this issue, such as installing the wrong version, access rights and failed installation.

Please check the following steps:

1. Check if you are logged into your SharePoint Server with user who has **Administrator rights** to the SharePoint databases in your SQL server.
2. Make sure that you choose and install the appropriate MSI file for your operating system (64bit or 86x) from our website at www.kwizcom.com
3. If you use Windows 2008, you will need to use “Run as Administrator” options to install or executed setup from a command prompt with admin rights.



4. If you have a farm environment, please make sure you have installed the KWizCom component on each server in the farm.
5. If you still cannot see the installed web part/feature, try to install the KWizCom component manually on your server using stsadm utility. Please follow the following steps:
 - a. Go to "Start" then "Run" then type "CMD"
 - b. Depending on your KWizCom product, modify the extension path based on your component and enter the following command:

Example for List Aggregator

```
"C:\Program Files\Common Files\Microsoft Shared\web server extensions\12\BIN\stsadm" -o addwppack -filename "C:\Program Files\KWizCom\KWizCom SharePoint List Aggregator Web Part>ListAggregator_Deploy.cab" -globalinstall -force
```

Example for Forum web part

```
"C:\Program Files\Common Files\Microsoft Shared\web server
```

```
extensions\12\BIN\stsadm" -o addwppack -filename "C:\Program Files\KWizCom\KWizCom SharePoint Forum Web Part\DiscussionForumView_Setup.cab" -globalinstall -force
```

Example for Combo list filter

```
"C:\Program Files\Common Files\Microsoft Shared\web server extensions\12\BIN\stsadm" -o addwppack -filename "C:\Program Files\KWizCom\KWizCom SharePoint List Filter Plus Web Part\ComboListFilter_Deploy.cab" -globalinstall -force
```

Example for Tagging Feature

```
"C:\Program Files\Common Files\Microsoft Shared\web server extensions\12\BIN\stsadm" -o addwppack -filename "C:\Program Files\KWizCom\KWizCom SharePoint Tagging Feature\TaggingSolution_Deploy.cab" -globalinstall -force
```

Example for Remote List Viewer

```
"C:\Program Files\Common Files\Microsoft Shared\web server extensions\12\BIN\stsadm" -o addwppack -filename "C:\Program Files\KWizCom\KWizCom SharePoint Remote List Viewer\SPRemoteListViewer_Deploy.cab" -globalinstall -force
```

Example for Survey Plus

```
"C:\Program Files\Common Files\Microsoft Shared\web server extensions\12\BIN\stsadm" -o addwppack -filename "C:\Program Files\KWizCom\KWizCom SharePoint SurveyPlus Web Part\QuickPoll_Deploy.cab" -globalinstall -force
```

Example for Calendar Plus

```
"C:\Program Files\Common Files\Microsoft Shared\web server extensions\12\BIN\stsadm" -o addwppack -filename "C:\Program Files\KWizCom\KWizCom SharePoint CalendarPlus Web Part\CalendarPlus_Deploy.cab" -globalinstall -force
```

Example of WSS Cross Site Search

```
"C:\Program Files\Common Files\Microsoft Shared\web server extensions\12\BIN\stsadm" -o addwppack -filename "C:\Program Files\KWizCom\KWizCom WSS 3.0 Cross Site Search\WCSS2007_Deploy.cab" -globalinstall -force
```

Example for Picture Library

```
"C:\Program Files\Common Files\Microsoft Shared\web server extensions\12\BIN\stsadm" -o addwppack -filename "C:\Program Files\KWizCom\KWizCom SharePoint Picture Library Plus Web Part\ImageGallery_Deploy.cab" -globalinstall -force
```

Example for Image Rotator

```
"C:\Program Files\Common Files\Microsoft Shared\web server extensions\12\BIN\stsadm" -o addwppack -filename "C:\Program
```

```
Files\KWizCom\KWizCom SharePoint Image Rotator Web  
Part\ImageRotator_Deploy.cab" -globalinstall -force
```

Example for Media Plus

```
"C:\Program Files\Common Files\Microsoft Shared\web server  
extensions\12\BIN\stsadm" -o addwppack -filename "C:\Program  
Files\KWizCom\KWizCom Media Plus\MediWebPart_Deploy.cab" -  
globalinstall -force
```

Example for Org. Chart

```
"C:\Program Files\Common Files\Microsoft Shared\web server  
extensions\12\BIN\stsadm" -o addwppack -filename "C:\Program  
Files\KWizCom\KWizCom SharePoint Org. Chart Web  
Part\HierarchyViewer_Deploy.cab" -globalinstall -force
```

Example of Remote List Viewer

```
"C:\Program Files\Common Files\Microsoft Shared\web server  
extensions\12\BIN\stsadm" -o addwppack -filename "C:\Program  
Files\KWizCom\KWizCom SharePoint Remote List  
Viewer\SPRemoteListViewer_Deploy.cab" -globalinstall -force
```

2. Activation

In order to activate a KWizCom product you should send the **product code** to KWizCom activation department and get back the matching **activation code**.

To get the product code please log in to your SharePoint server, look at the Start->All Programs->Programs menu for KWizCom->[Product Name] There you will find the Activation Program, where you will have your Product Code displayed (Product Code).

Copy the product code and send it to activation@kwizcom.com with your Share-it order number or KWizCom invoice number.

The activation code will be sent you in one business day.

To enter the activation key please log in to your SharePoint server, look at the Start->ALL Programs->Programs menu for KWizCom->Product Name. There you will find the Activation Program, where you should enter the activation code. Please let us know that the activation process was completed successfully, or of any problems you incurred during the process.

If you get "Invalid activation code message" please check the following steps:

1. You apply the activation code for correct server (for the same server which the product code was sent)
2. You do not have any spaces when you put the activation code.
3. When you open the Activation utility you may get "Run As" dialog. Uncheck "Run this program with restricted access" checkbox
4. If you have Windows 2008, please try to run the Activation utility as administrator:

CalendarPlus Web Part:

1. Go to C:\Program Files\KWizCom\KWizCom SharePoint CalendarPlus Web Part folder
2. Right click on KWizCom.CalendarPlus.Register.exe file
3. Select "Run as Administrator" option.

Tagging Feature:

1. Go to C:\Program Files\KWizCom\KWizCom SharePoint Tagging Feature folder
2. Right click on TagsFeature_Register.exe file
3. Select "Run as Administrator" option.

Rating Solution:

1. Go to "C:\Program Files\KWizCom\KWizCom SharePoint Rating Solution Field" folder
2. Right click on "KWizCom.SharePoint.Rating.ActivateRatingField.exe" file

3. Select “Run as Administrator” option.

WikiPlus:

1. Go to “C:\Program Files\KWizCom\KWizCom SharePoint WikiPlus Solution” folder
2. Right click on “WikiPlus_Activate.exe” file
3. Select “Run as Administrator” option.

Forum Web Part:

1. Go to “C:\Program Files\KWizCom\KWizCom SharePoint Forum” folder
2. Right click on “KWizCom.SharePoint.WebPart.Forum.Activate.exe” file
3. Select “Run as Administrator” option.

List FilterPlus Web Part:

1. Go to C:\Program Files\KWizCom\KWizCom SharePoint List Filter Plus Web Part folder
2. Right click on KWizComKWizCom.DropDownFilter.Register.exe file
3. Select “Run as Administrator” option.

SurveyPlus Web Part:

1. Go to C:\Program Files\KWizCom\KWizCom SharePoint SurveyPlus Web Part folder
2. Right click on KWizCom.QuickPoll.Register.exe file
3. Select “Run as Administrator” option.

Cascading Lookup Field Type:

1. Go to C:\Program Files\KWizCom\KWizCom SharePoint DualLookup Field folder
2. Right click on DualLookup_Register.exe file
3. Select “Run as Administrator” option.

Picture library Web Part:

1. Go to C:\Program Files\KWizCom\KWizCom SharePoint Picture Library Plus Web Part folder
2. Right click on ImageGallery_Register.exe file
3. Select “Run as Administrator” option.

List Aggregator Web Part:

1. Go to C:\Program Files\KWizCom\KWizCom SharePoint List Aggregator Web Part folder
2. Right click on ListAggregator_Deploy.cab file

3. Select "Run as Administrator" option.